

○ Francisco Hernandez (2047)

● Albertus ten Hertog (1947)

Dutch Team Cup (1)

ENPS vs Moira-Domtoren

2017.10.20

1-0

A08

1.e4 (1:35) 1...e6 (1:42) 2.d3 This is quite annoying for most French defence players 2...c5 3.♘f3 ♘c6 4.g3 d5 5.♗bd2 (1:34) 5...♗f6 (1:42) 6.♙g2 ♙e7 7.O-O O-O 8.♚e1 d4 Normal continuations are

8...b6 9.e5

8...b5 9.exd5

9.e5 ♗d5 10.♗e4?! (1:31) I don't like this move. Probably

10.h4 Followed by the standard plan Nf1-Nh2 is better

10...h6 (1:38) 11.c4 dxc3 12.bxc3 ♖a5 13.♙d2 c4!? After

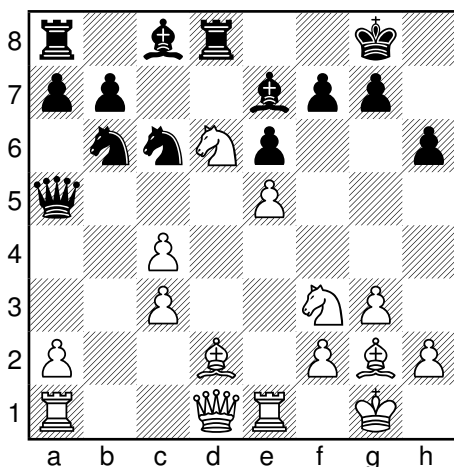
13...♖c7 I was planning to go 14.c4 ♗b6 15.♙c3 (15.♙f4!?)

14.dxc4 The machine claims a big advantage after the crazy variation

14.g4 f5 15.exf6 ♗xf6 16.♗xf6+ ♖xf6 17.dxc4 but g4 never crossed my mind

14...♗b6 15.♗d6 (1:16) 15...♖d8 (1:16) I was worried about

15...♙xd6 16.exd6 ♗xc4 17.d7 ♙xd7 18.♙xh6 gxh6 19.♖xd7 after which black's king doesn't look too weak



16.♙f4? I missed

16.♗d4 ♗xe5 17.♗b3 wins the piece

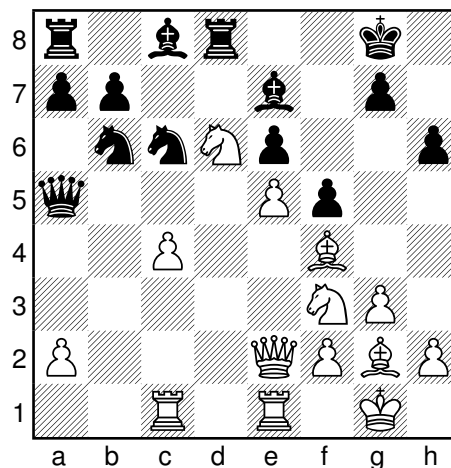
16...♖xc3? Again, I think

16...♙xd6 17.exd6 ♗xc4 is the strongest continuation for black

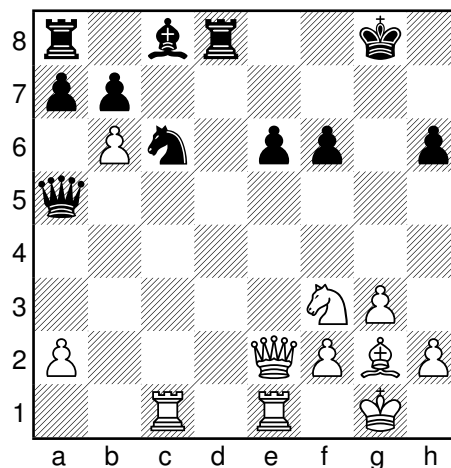
I was planning to answer 16...g5 with the piece sacrifice 17.♗xg5!

I think the endgame after 16...♗xc4 17.♗xc4 ♖xd1 18.♗xa5 ♖xa1 19.♖xa1 ♗xa5 is better for me despite the pawn structure, since my pieces are more active

17.♖c1 Now I have a comfortable advantage 17...♖a5 18.♖e2 f5??



19.exf6 ♙xd6 20.♙xd6 (0:47) 20...♖xd6 (0:58) 21.c5 ♖d8 22.cxb6 gxf6



23.♙h3?! Weak play, which fortunately doesn't spoil the advantage

I spotted the winning **23. ♖xc6! bxc6**
24. b7 ♙xb7 25. ♗xe6+ ♕g7 but I didn't
see a clear win here. Of course now with
my mind cold I see that in worst case sce-
nario I can take back the material

23...e5? loses, but the defence was already
pretty difficult **24. ♙xc8 ♗axc8 25. ♗e4** (0:28)
25...♕g7 (0:43) **26. ♘h4 ♗xb6 27. ♗g6+ ♕f8**
28. ♗xf6+ ♕e8 29. ♘f5 ♗d2 30. ♗xe5+ (0:23) 1-
0
